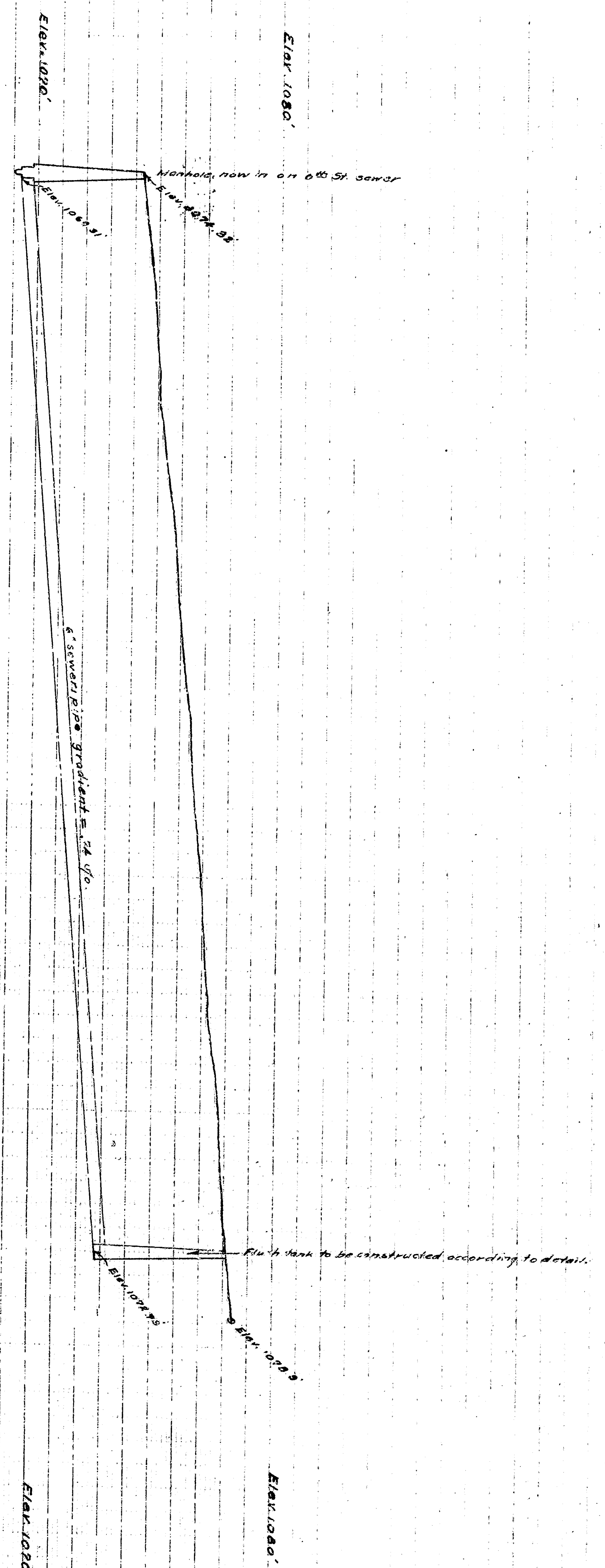


0100  
1100  
2100  
3100  
4100  
4160 - 2 of this town  
5100  
6100

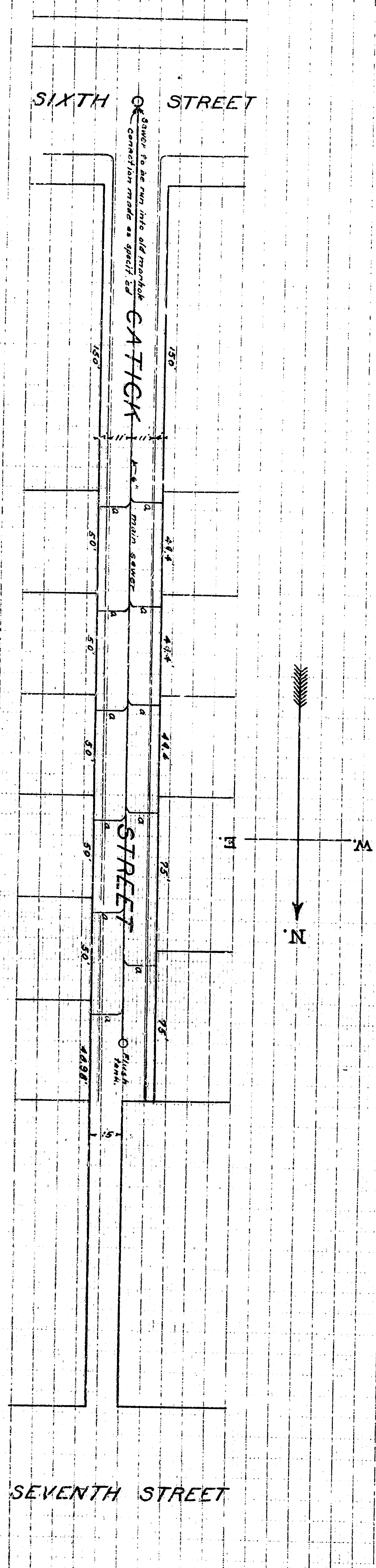


**CATLICK STREET  
SEWER**

A MANHOLE AT THE INTERSECTION OF SIXTH STREET AND CATLICK STREET TO A POINT 140 FEET NORTH OF THE CENTER OF SIXTH STREET.

ABBREVIATIONS:  
THE MARK (M) MEANS FEET OR FOOT.  
THE MARK (D) MEANS INCH OR INCHES.  
RED LINE SHOWS LINE OF SEWER.  
THE LETTER 'O' SHOWS THE LOCATION OF 4 INCH LATERALS.  
BLUE LINE IS THE CURB LINE.

DETAILS OF SEWER:  
4.58 LINEAL FEET OF 6 INCH SEWER PIPE (W/INSURED)  
1.54 LINEAL FEET OF 4 INCH LATERAL SEWER PIPE (W/INSURED)  
11 - 6 INCH X 4 INCH 'Y' BRANCH PIPES  
11 - 3/8 BEND 4 INCH PIPES  
1 - FLUSH-TANK  
1 - 6 INCH CONNECTION INTO OLD MANHOLE



APPROVED BY THE CITY COUNCIL OF THE CITY OF SAN BERNARDINO AT ITS MEETING OF 1911.  
CITY CLERK.

FILED  
CITY ENGINEER  
1911.

Approved Joseph W. Parr

Approved Joseph W. Parr

21